



0%

EFFORT

100% PLUG & PLAY

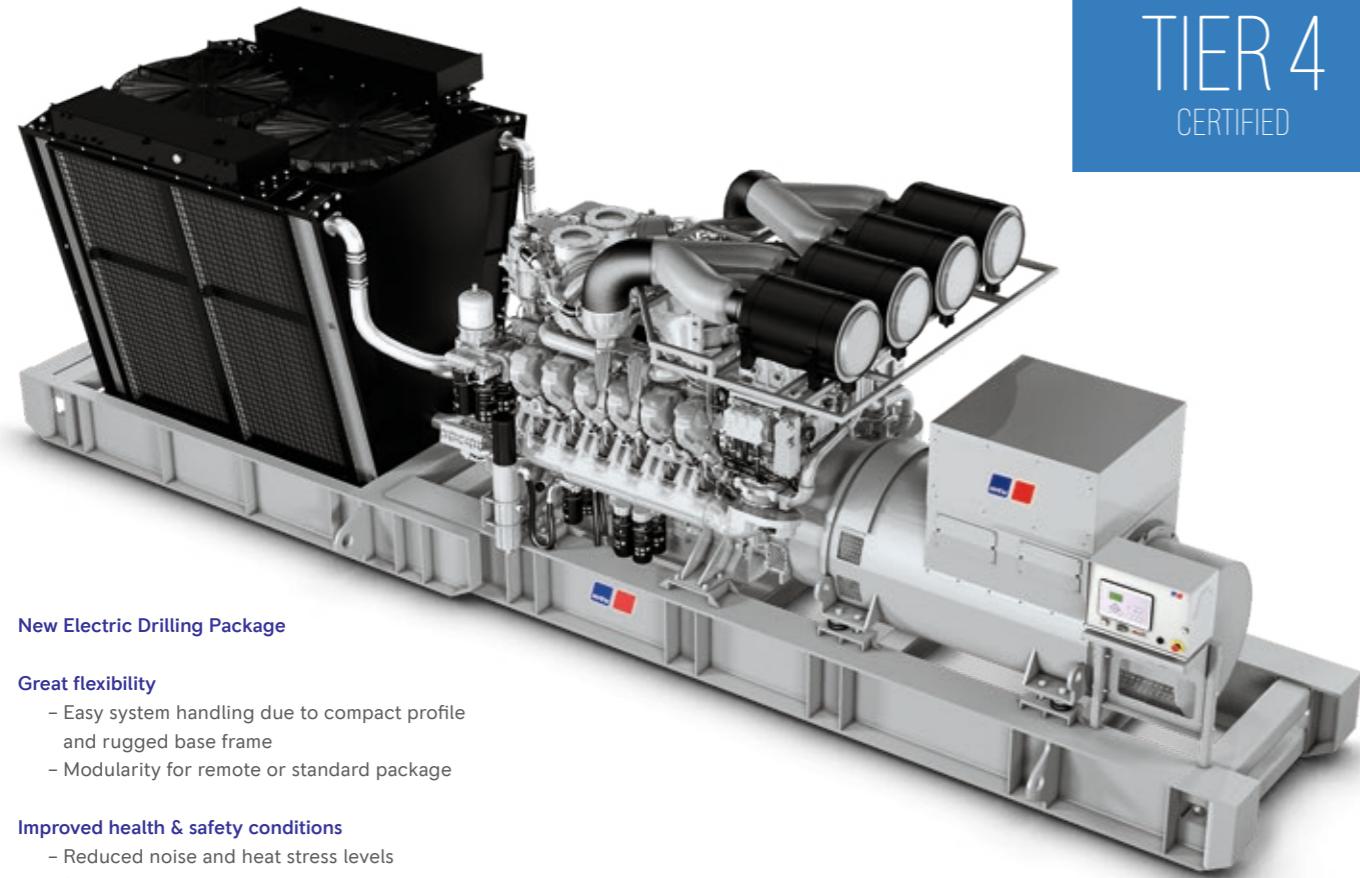
Oil & Gas

ELECTRIC DRILLING
PACKAGE SERIES



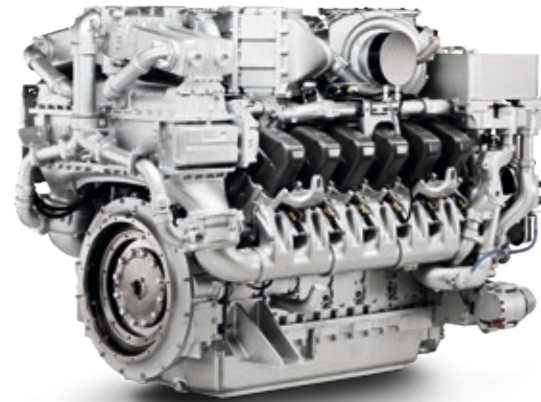
A Rolls-Royce
solution

TIER 4
CERTIFIED



New Electric Drilling Package

- Great flexibility**
- Easy system handling due to compact profile and rugged base frame
 - Modularity for remote or standard package
- Improved health & safety conditions**
- Reduced noise and heat stress levels for personnel



Series 4000 Tier 4 diesel engine

- Cost-effective**
- No additives needed for emissions control
 - Lower lifecycle costs
- Maximum performance and durability**
- Full performance available up to 13,000 ft (4,000 m)¹
 - Optimized power-to-weight ratio
 - Rugged, reliable design
- Proven technology**
- Fourth-generation common rail injection system with excellent transient behavior
 - New generation of the successful Series 4000 engine

¹Dependant on air intake temperature. Subject to confirmation.

NEW ELECTRIC DRILLING PACKAGE – THE FLEXIBLE ALL-IN-ONE SOLUTION.

MTU's New Electric Drilling Package is an all-in-one solution, including genset and radiator, developed to answer all the needs of a drilling operation, whatever the conditions.

Greater flexibility for operators
The New EDP offers great flexibility to drilling operators: wherever you plan to use your equipment in future - the New EDP is ready for it. Cold start capability down to 14 °F / -10 °C (without preheating) and going up to 131 °F / 55 °C ambient allows operation from harsh winter to scorching summer. Thanks to its compact dimensions, the New EDP also fits perfectly into a 40-foot open-top high cube container.

Ruggedness and improved safety
All system components are built for maximum durability and designed to withstand the extreme environmental conditions at oil and gas wells all around the world. At the same time, reduced heat and noise emissions – thanks to the radiator – mean improved operational safety and less strain on personnel.

Economical power and high performance
The New EDP is powered by an MTU 12V 4000 engine capable of continuous output at 2012 bhp (1,500 kW) and 1800 rpm. Featuring industry-leading technology and a proven common rail injection system, the engine delivers outstanding fuel economy and full performance up to 13,000 ft (4,000 m)¹.

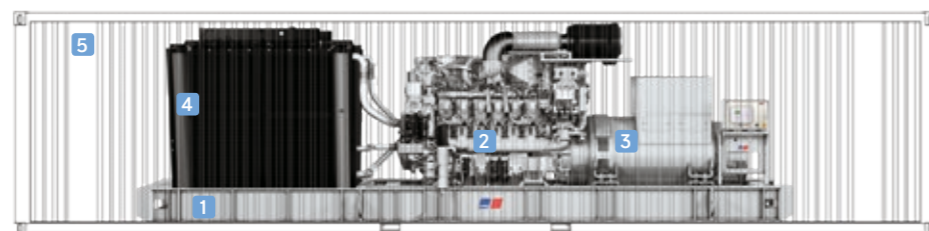
Quality and service
All components are engineered to meet the highest quality standards and designed for easy serviceability. Everything comes from one trusted source and is designed to work together, which prolongs preventive maintenance and overhaul intervals. Expert support is available worldwide through MTU's global network.

One trusted partner - several solutions.
Built to suit the needs of today's drilling operations, the MTU Electric Drilling Packages (EDP) deliver high performance, efficiency and reliability from one trusted partner. The self-contained package integrates diesel engine, generator, radiator and other MTU components seamlessly.

Electric Drilling Packages (EDP) – Technical Overview

Application	Rated power (mechanical)		Speed	Frequency	Emission qualification
	kW	bhp	rpm	Hz	
Prime power operation					
4000 T25L	1500	2012	1800	60	EPA Nonroad T4 (40CFR1039)
4000 G73	1105	1482	1200	60	EPA Nonroad T2 Comp (40CFR89)
4000 G23	1420	1904	1500	50	Emission optimized (TA-Luft)

- 1 Base frame
- 2 Series 4000 Tier 4 diesel engine
- 3 Generator
- 4 Radiator
- 5 Compact system design fits easily in a 40-foot open top high cube container



- 1 Electric Drilling Package (EDP) for 50Hz
 - Configuration: 12V 4000 G23
 - Rated Power: 1420 kW
- 2 Electric Drilling Package (EDP) for 60Hz
 - Configuration: 12V 4000 G73
 - Rated Power: 1105 kW

